

TINY CONTAINER VILLA

INNOVATIVE MODULAR CONTAINER HOUSE



A CONTAINER FURNISHED SMALL VILLA WITH EXTERNAL WALKWAYS, COVERING AN AREA OF 48 SQUARE METERS, EQUIPPED WITH BEDROOMS, BATHROOMS, KITCHENS, LIVING ROOMS, ETC

PRODUCT DESCRIPTION

Assembled container houses refer to the process of combining multiple container accessories together to form a complete house structure. It has the characteristics of being fast, flexible, and mobile, gradually becoming an innovative building method in the field of modern architecture.

Assembled containers have a wide range of applications, and the following are some common application areas:

Temporary accommodation: Assembled containers can be used as temporary accommodation.

Office space: Can be quickly built into an office.

Commercial use: can be converted into shops, cafes, restaurants, mobile kiosks, etc.

Tourist resort: can be used to create characteristic homestays, vacation homes, camping parking spaces, etc.

Educational facilities: can be transformed into educational institutions such as schools, libraries, training centers, etc.

Medical facilities: can be used as medical and health stations, mobile clinics, first aid points, etc.

Art creative space: used to display artworks, hold cultural activities, temporary exhibitions, etc.

Compared to traditional buildings, the construction speed of prefabricated container houses is faster. It can be prefabricated in the factory and then assembled on-site, saving construction time and reducing environmental interference.

CONTAINER HOUSE

ASSEMBLED CONTAINER VILLA WITH SLOPING ROOF



PRODUCT RENDERING



FRONT VIEW

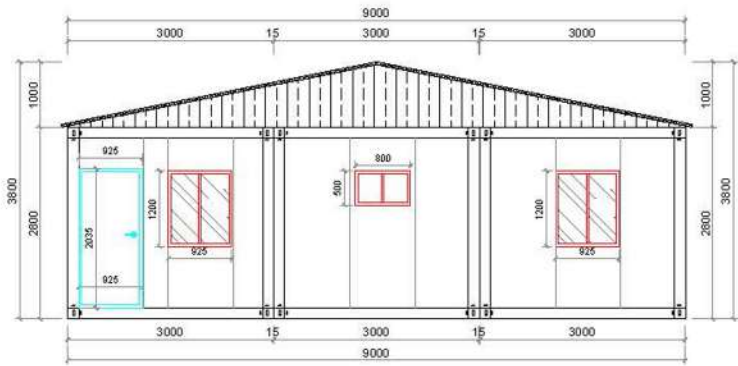


SIDE VIEW

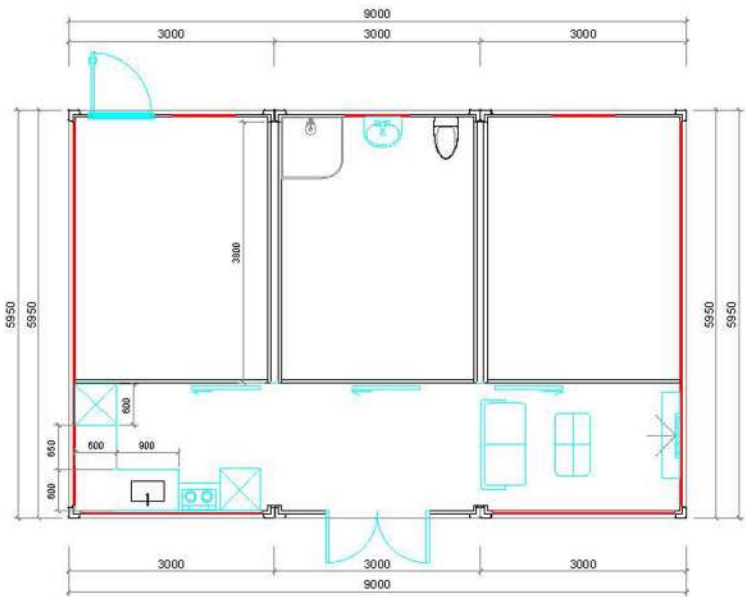


VERTICAL VIEW

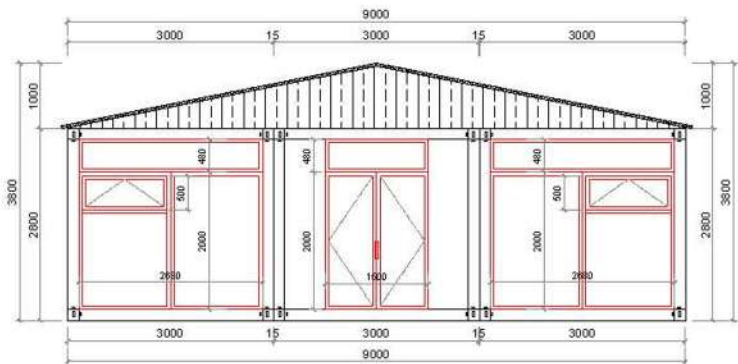
PRODUCT CAD DIMENSIONAL DRAWING



BACK VIEW



FIRST FLOOR PLAN



FRONT VIEW

PRODUCT PARAMETERS

Items	Descriptions	Materials
Coulmn	2.48m*2.3mm	Glvanized steel
Roof Beam	5630mm*160*2.3mm	Glvanized steel
	2680mm*160*2.3mm	Glvanized steel
Roof square tube	50mm*50mm*2790mm	Glvanized steel
	40mm*80mm*1880mm	Glvanized steel
	40mm*80mm*5830mm	Glvanized steel
Bottom Main Beam	5630mm*160*2.3mm	Glvanized steel
	2680mm*160*2.3mm	Glvanized steel
Bottom square tube	80mm*80mm*2990mm	Glvanized steel
	40mm*80mm*2990mm	Glvanized steel
Corner Fitting	160mm*160mm*4mm	Glvanized steel
Wall Panel	50 mm Eps / Rockwool panel, steel sheet thickness:0.3mm	Eps/ Rockwool Material
Window	925*1200mm	Plastic steel glass window with Guard bar
Door	925x2035mm	Steel Plate with lock
Tile	0.23mm ceiling roof	Steel Sheet Plate
	0.45mm roof	Steel Sheet Plate
Roof Insulation	Double layer Glasswool Density 14KG/m ³	Glass wool material
Floor	MGO Board	A Grade Fireproof MGO Board 18mm
Accessory Parts	Screw Blot, Nail, steel bending Trims	

DETAILED LAYOUT OF CONTAINERS



Standard white
Assemble Container House with 2 bedrooms

Window* 4 pcs:925mm* 1200mm

Steel Door*2pcs: 925mm*2035mm

Folding of the inner door *2

3M width internal partition wall panel

External Size:

5950mm(L)*3000mm(W)*2800mm(H)

Roof Ceiling: 0.45mm Roof & 0.23mm ceiling
Roof & Glasswool insulation

Wall: 50mm EPS/ Rock wool Sandwich wall
panel

Floor: A Grade Fireproof MGO Board 18mm

Standard white
Assemble Container House with 1 Bathroom

1 Set bathroom:shower room, sitting toilet, wash
basin, Waterproof and non-slip PVC
flooring 2.5mm for bathroom

Shades window* 1 pcs:920*410mm

Steel Door* 1pcs: 925mm*2035mm

1.6m Width sliding Glass Door

3M+2M+2M width internal partition wall panel

External Size:

5950mm(L)*3000mm(W)*2800mm(H)

Floor: A Grade Fireproof MGO Board 18mm for
room



DETAILED LAYOUT OF CONTAINERS



Standard white Assemble Container House with 1 bedrooms and kitchen area

Window* 4 pcs:925mm* 1200mm

Steel Door* 1pcs: 925mm*2035mm

Folding of the inner door * 1

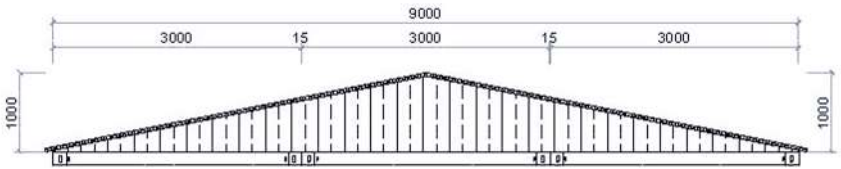
3M+3M width internal partition wall panel

External Size:
5950mm(L)*3000mm(W)*2800mm(H)

Roof Ceiling: 0.45mm Roof & 0.23mm ceiling
Roof & Glasswool insulation

Wall: 50mm EPS/ Rock wool Sandwich wall panel

Floor: A Grade Fireproof MGO Board 18mm



Triangular roof:9M length *9M width=81m²



Total External Size:9000mm*3000mm*2800mm

Railing 12m width

Bottom enhanced tube + Outdoor WPC wood plastic board

PRODUCT ACCESSORIES

The floor drain



Electric water heater



Clothes hook



Wash basin



Shower



Squatting pan



Pedestal pan



Independent bathroom



Water tank



PVC anti slip cushion



Stone plastic board



Dresser



PRODUCT ACCESSORIES

Wood floor



Plastic floor



Cupboard



Lamps and lanterns



Ceiling lamp



Lamp tube



Broken bridge aluminum door



Plastic steel window



Aluminum alloy sliding door



Polyurethane composite board



Rock wool composite board



Steel 831 ceiling



Polystyrene composite board



CONTAINER CUSTOMIZATION

WPC Wall Board



Light gray



Khaki color



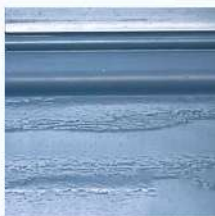
Wheat golden yellow



Carbon crystal black



Police Blue



Brick Blue



Teak grain



Brick red



Big Red



Angel White



Black Walnut



Teak color

PVC flooring



PRODUCT ADVANTAGES

Container villas are luxury residential villas that transform containers. Although they originated in tourism and vacation venues, container villas are increasingly being widely used. The following are some application scenarios for container villas:

1. Resort: Container villas can be used as a resort or part of a resort to provide a luxurious accommodation experience. They can be located in various scenic areas such as the seaside, mountainous areas, or rural areas, providing privacy and comfort for tourists.
2. Nature Reserve: Container villas can be built in nature reserves or ecotourism areas, providing accommodation without causing significant impact on the natural environment. This design combines modern comfort with the harmony of natural ecology.
3. Temporary accommodation: Container villas can be used for temporary accommodation, such as construction sites, disaster relief areas, or temporary camping sites. They can be quickly built and provide basic living facilities and comfortable living environment to meet temporary living needs.
4. Urban renewal: Container villas can be used for urban renewal projects, especially in old industrial areas or urban wasteland. This innovative way of living can provide new living spaces for cities while reducing the demand for land resources.
5. Temporary office space: Container villas can be used as temporary office spaces, such as cultural events, exhibitions, or corporate projects. They provide a quickly built space for temporary work and activities.

Overall, container villas have a wide range of application scenarios. In addition to being part of resorts or resorts, they can also be used in areas such as nature reserves, temporary accommodation, urban renewal, and temporary office spaces. With the increasing demand for environmentally friendly and sustainable development, container villas will continue to play an important role in various fields.



PRODUCT RENDERING



PRODUCT RENDERING

